



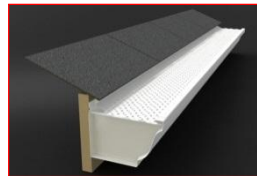
Aluminum Drop-In Cover

- ✓ Filters out leaves, pine needles and small debris
- ✓ Allows maximum water flow; up to 22 inches of rain per hour
- ✓ **Green Constructed; made from 98% Recycled Aluminum**
- ✓ Patent-Pending Raised Ridges and Multi-Angle Ports increase water flow and increases self-cleaning
- ✓ Fascia mounting strengthens the gutter system
- ✓ Ultra low profile lip attachment is invisible from the ground
- ✓ Drop-In design and Multiple adjustment angles accommodates all hangers, including hangers with screws and never interferes with roofing material
- ✓ Weather resistant; no corrosion



Installation

Fast and Simple to Install
 No clips, hangers or brackets to install
 Lays flat inside the gutter
 Overlap tabs for quick mating of panels
 Attaches and secured to the gutter lip with zip screws



Technical Data

Material: .019 3105H24 Aluminum
Finish: Baked on Enamel
Panel Length: 6 ft. Inter-Locking Panels
Panel Width: 4.5, 5, 6 and 7 inch
Carton: 300 ft., in fifty 6 ft. sections
Warranty: 20-yr Performance & Material Guarantee

Standard Colors

White:



Dark Bronze:

Colors shown are close to actual finish, however actual colors may vary.



20221 Park Rd., Elkhorn, NE 68022 Toll Free: 877-281-2700 Fax: 402-289-5315